

# If you can make it here, you can make it anywhere

## ADVETO ECDIS-4000

featuring Internet connection for on-line ordering and download of charts



The ADVETO ECDIS-4000 is based on IMO requirements and more than 20 years of experience with innumerable users around the globe.

ECDIS-4000 offers any navigator a user-friendly, cost-effective solution with unique functionalities for precision navigation of professional vessels with ECDIS and ENC's.

ECDIS-4000 is DNV and USCG certified to comply with all relevant regulations and standards for use onboard SOLAS vessels and High Speed Crafts.

**ADVETO**  
ADVANCED TECHNOLOGY AB

## Chart Order and Download Online over Internet will save time and money

Simple and efficient way of ordering and downloading official ENC from PRIMAR, guarantees that updated charts are always used.

You pay only for the charts needed and for 3, 6 or 12 months, depending on your operation and you continue to navigate while the charts are downloaded.

## Predictors

Different predictors. From the simplest vector, showing only speed and course over ground, to the most advanced, featuring ship's sweep area, extra vectors for fore-and-aft and abeam speed, the rate of turn (ROT) and with shadows showing the history.

## Multi Routes

It is a great advantage to be able to handle and use Multi Routes. In a fast and flexible way, a route can be chosen depending on weather, meeting with other traffic etc. Multi Routes is also an excellent tool for Fast Ferry archipelago operations.

## Alternative Night Presentation Mode

In addition to the standard S-52 ECDIS presentation, an Alternative Night Presentation Mode is available.

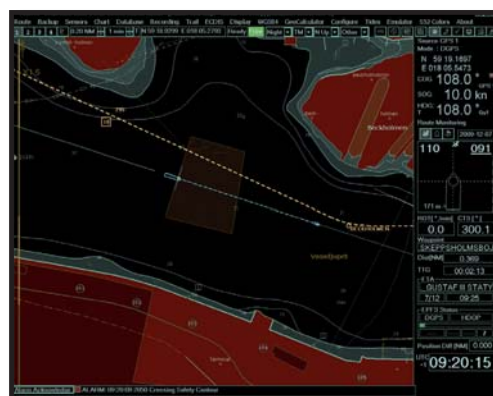
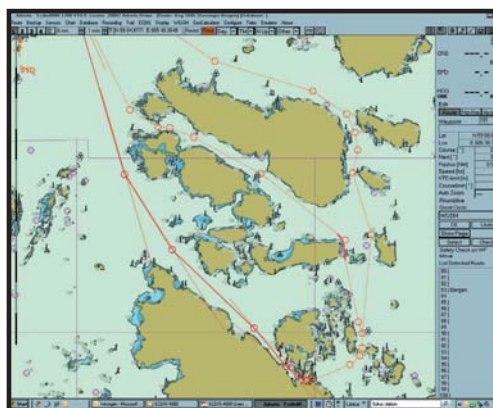
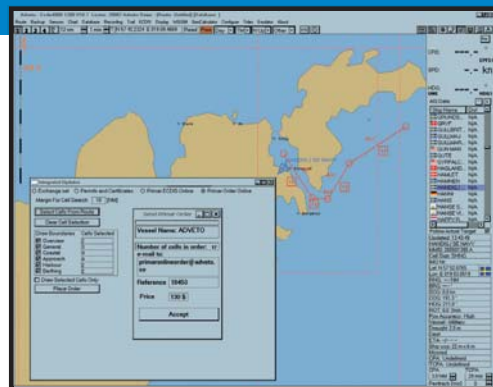
This is a customer requested mode, developed to further eliminate the risk of blinding the bridge crew during night navigation.

The colours are carefully selected to avoid marring night vision.

## ECDIS Control Unit 16USB

For quick, safe and easy selection of navigation functions, the ECDIS Control Unit 16USB is configured with a special "ECDIS-setting" in order to suit the ECDIS application in use.

A maximum of eight Control Units can be connected to the ECDIS-computer, each with same or different functionalities from the others. The Control Unit can easily be mounted on a bridge-chair's armrest.



## ECDIS-4000 is available in three versions: Base, Standard and Extended

Adveto ECDIS-4000 functions	Base	Standard	Extended
<b>GENERAL</b>			
Type-approved for ECDIS	•	•	•
Prepared for Adveto's Control Unit	•	•	•
Number of "views" – individual presentation	1	2	4
<b>CHARTS</b>			
PRIMAR-charts from S-63 CD-ROM	•	•	•
PRIMAR ONLINE via Internet Download (when combined with Adveto ESIG HW)		•	•
PRIMAR ORDER from ECDIS via Internet (when combined with Adveto ESIG HW)			•
ChartWorld global charts	•	•	•
<b>NAUTICAL FUNCTIONS</b>			
"Docking" = Harbour manouver			•
Adveto's Full Predictor with "swept area"		•	•
Shadow ship function		•	•
Conning Display		•	•
<b>ROUTES</b>			
Routes – MS Office/Access compatible	•	•	•
Legs and turns with individual radius	•	•	•
Multi Routes-module		•	•
<b>HSC SPECIALS</b>			
Alternative Night Presentation Mode		•	•
CCTV presentation		•	•
<b>SENSORS</b>			
EPFS (DGPS) 2 channels	•	•	•
Compass (Gyro) 2 channels	•	•	•
Speed log & AIS & Radar (ARPA)	•	•	•
Echo sounder	•	•	•
Wind meter input		•	•

## DNV and USCG certified

ECDIS-4000 is DNV and USCG certified to comply with all relevant regulations and standards for use onboard High Speed Crafts and SOLAS vessels.

For more info, please visit our website: [www.adveto.com](http://www.adveto.com).



## ECDIS-4000 system comprises the following equipment:



- **Computer-unit with ECDIS-4000 software loaded.**

Hatteland HTC01 with SSD Solid State Disk for reliable operation and long lifetime



- **Monitor 19, 20 or 23 inch**

Hatteland JH 19 (or 20 or 23) T14 MMD-AA1-A0BA

- **ENC-Charts**

Ordered and downloaded via Internet direct from PRIMAR



- **Keyboard with integrated Trackball**

Cherry G84-5400 or CKS 96T – OEM



- **SCU (Sensor Connection Unit)**

Placed where the sensors and cables are with a LAN connection to the Computer



- **Optional Trackball**

Mouse-Trak, B9PIND



- **Optional ECDIS-Control unit**

For remote quick, safe and easy selection of navigation functions



- **Optional ECDIS Security Internet Gate (ESIG)**

Allowing the ECDIS to be connected to internet for both online ordering and download of charts from PRIMAR

- **ECDIS-Backup system**

A dual installation of ECDIS-4000 fulfils the requirements to sail "paperless"

**“ADVETO ECDIS is very user-friendly and it is obvious that it was specially designed and produced for us in the shipping business.”**

Adveto in Stockholm-Spånga offers the world market complete systems for precision navigation with ECDIS and ENCs (official Electronic Nautical Charts).

Our user-friendly systems are developed in close cooperation with our customers and based on the special conditions for navigation in the complex and critical waters of the widespread Scandinavian archipelagos.

We deliver complete system solutions and take the responsibility for installation and training directly or via our representatives.

To maximize our customers' availability of our systems, we also give professional and comprehensive global after-sales support and service.

### **Development in cooperation with clients**

Adveto clients are close partners in our efforts to constantly improve our solutions.

Our ECDIS Control Unit and the Alternative Night Presentation Mode were developed in cooperation with captains of the Norwegian Fast Ferries, to better suite their special kind of operation.



ADVETO Advanced Technolgy AB

P.O. Box 8028

SE-163 08 Spånga (Stockholm), Sweden

Tel +46 8 36 69 05 • Fax +46 8 36 18 85 • mail@adveto.se • www.adveto.com

**ADVETO**  
ADVANCED TECHNOLOGY AB